



Douglas Indian Association Tribal Government
Sandy Beach Area Marine Debris Crab Pot Removal Project 2017
Gastineau Channel, Juneau, Alaska
Service Order DIA-DFG-001.1

Fenn Enterprises, Aldrich Offshore Services and SEALASKA conducted a sidescan sonar survey for derelict crab pots in the area known as the Sandy Beach Study Area in Juneau, AK. Fenn Enterprises was onsite April 17-21 with sonar operations on April 18, 19 and 20. Time and weather allowed us to expand our sonar survey from the original study area to approximately double covering some 40 linear nautical miles and locating 209 pots. This survey was conducted with the use of 600kHz frequency sonar.

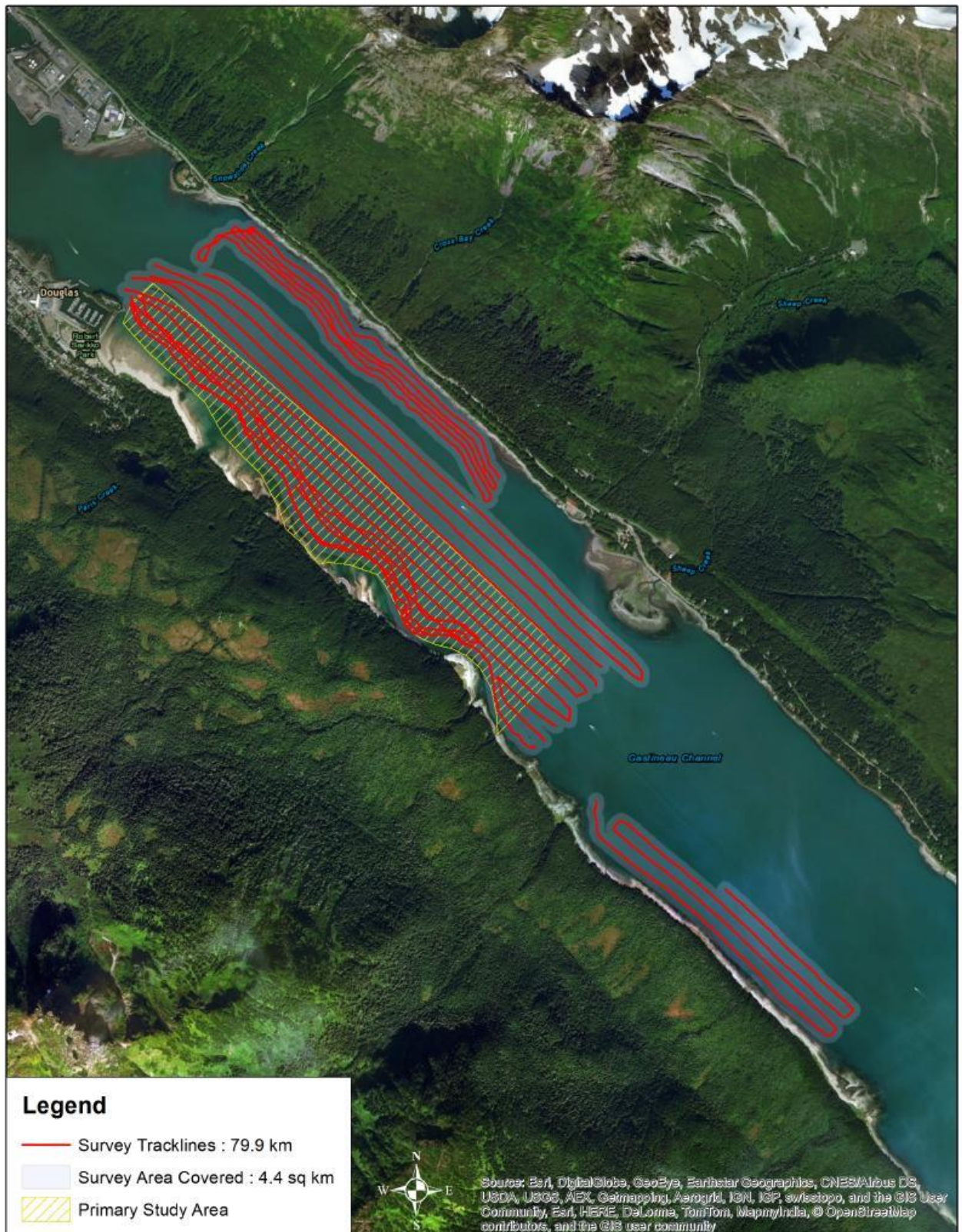
On our Target List we have rated the crab pots according to size. Pots up to 1M in size are rated 1, pots larger than 1M and less than 2M are rated 2, and pots over 2M are rated 3. Of the 209 pots located, 169 were rated 1, 32 were rated 2, and 8 were rated 3. There were also 4 boats and 5 tires located.

We have included sonar images in this report that depict the different pot size ratings, as well as images of tires and boats located in the survey area.

Data for this survey including MST/MKR/SVY files (MarineSonic Sidescan PC Format), Target List spreadsheet, and ArcInfo survey tracklines can be downloaded from this [Dropbox link](#).

The partnership of Fenn Enterprises, Aldrich Offshore Services and SEALASKA appreciate the opportunity to collaborate on this project for Douglas Indian Association and look forward to working with you again in the future.

Survey Tracklines



18APR140

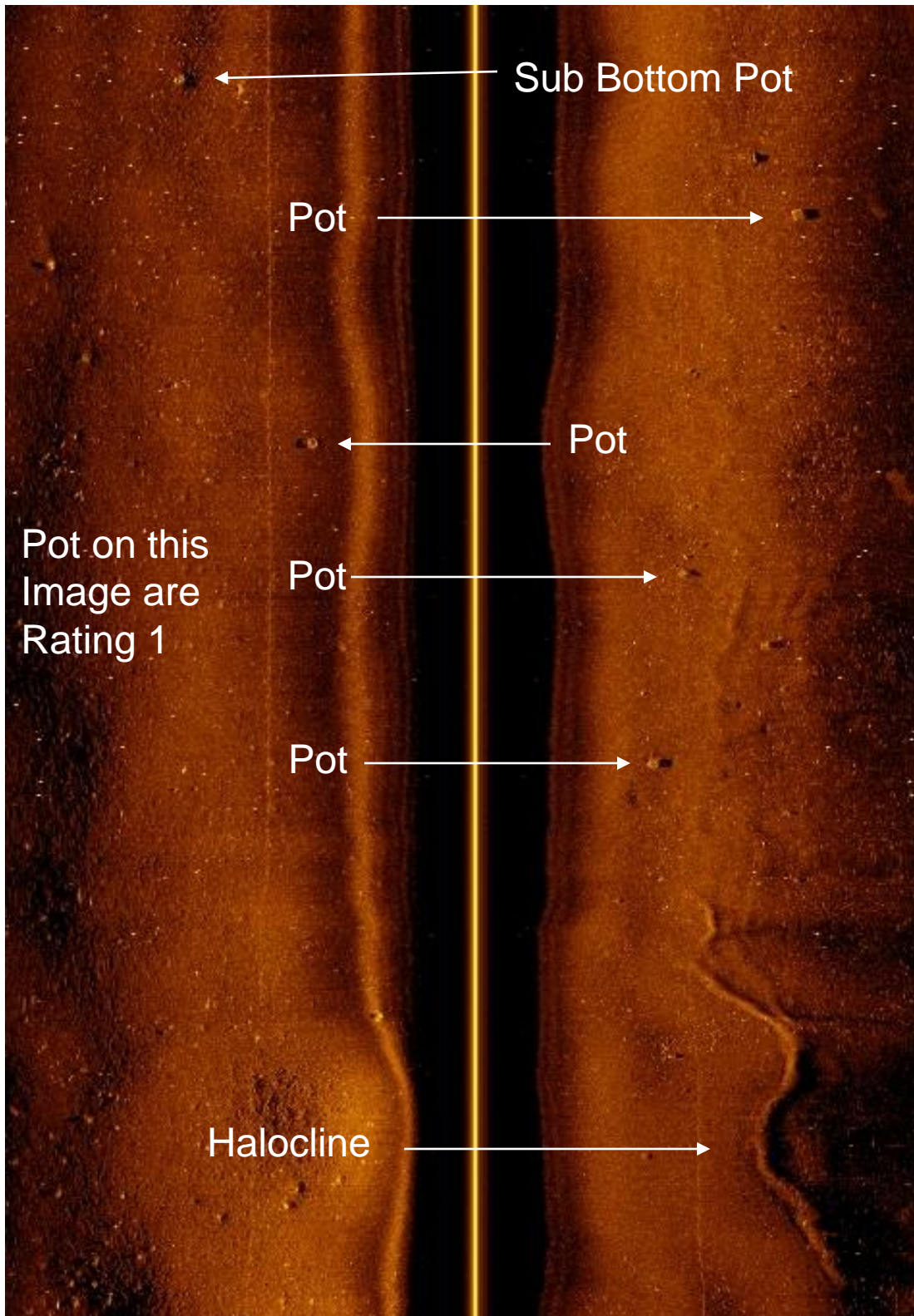
Sailboat



19APR045



19APR048



19APR125

Line &
Float →

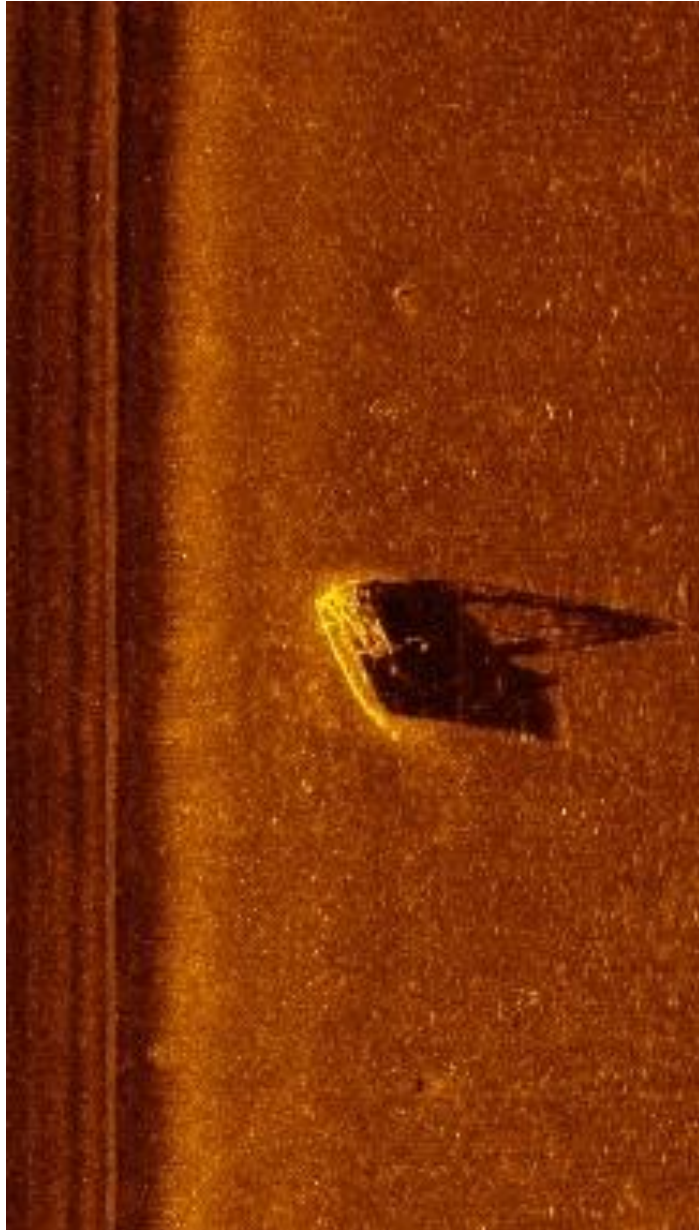
2M
Round
Pot →
Rating 2

2.2M
Square
Pot →
Rating 3



20APR020

Boat



20APR059

